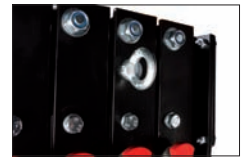


# TORRES T-117PA

## TOWERS T-117PA

240 kg.  
max

5,8 m  
max



### DETALLES TÉCNICOS / TECHNICAL DETAILS

Altura máxima / Maximum height:	5.8 m.
Altura mínima / Folded height:	1.98 m.
Carga máxima / Maximum load:	240 kg.
Material perfiles / Profiles material:	Aluminio / Aluminium
Base abierta / base area:	2.2 x 2 m.
Peso / Weight:	156 kg.
Cabrestante / Winch:	900 kg.
Acabado / Finished	Aluminio / negro Aluminium / black coat

